



Country Presentation: Building Learning Societies (BLS) through Learning Cities in Malaysia

Prepared by:
**Lifelong Learning National Secretariat
Policy and Research Division
Ministry of Higher Education (MOHE)
Malaysia**

Prepared for:
**SEAMEO CELLL Regional Workshop on “Roles of Learning Societies in Lifelong
Learning Promotion and Progress of Development in Southeast Asia”
Ho Chi Minh City, Vietnam
28 June 2022**





This set of presentation slides is prepared and submitted for the use during the Regional Workshop on “Roles of Learning Societies in Lifelong Learning Promotion and Progress of Development in Southeast Asia”, which is organised by the SEAMEO CELLL, Ho Chi Minh City, Vietnam on 28 and 29 June 2022. All contents provided in this set of presentation slides shall be used with the upmost integrity and solely for the analytical, policy making, reference, and/or discussion purposes only. All queries on materials, information, details, rights and licenses pertaining to this set of slides should be addressed to the Ministry of Higher Education Malaysia at the following address:

Human Development Unit
Human Capital Section
Policy and Research Division
Ministry of Higher Education
Level 13, No. 2, Tower 2, P5/6 Street, Precinct 5
62200 Putrajaya, MALAYSIA
Tel: +603-8870 ext 5364 / 6242 / 6251 / 6911
Email: upi.bppd@mohe.gov.my
Website: <https://www.mohe.gov.my/en/>



Contents

A

Lifelong Learning Scenario in Malaysia

A1. The Definition and Aspiration of Lifelong Learning (LLL) in Malaysia

A2. Main International Policy Documents Related to LLL Referred and Supported by Malaysia

A3. Main National Policy Documents Related to LLL

A4. Governance of Lifelong Learning in Malaysia

A5. Building Learning Societies (BLS) and Learning Cities

B

Learning Cities in Malaysia

B1. Petaling Jaya (PJ)

B2. Federal Territory of Kuala Lumpur (Kuala Lumpur)

B3. Federal Territory of Putrajaya (Putrajaya)

C

Conclusion



A Lifelong Learning Scenario in Malaysia

A1. The Definition and Aspiration of Lifelong Learning (LLL) in Malaysia

A1.1 Definition of Lifelong Learning in Malaysia

Learning engaged by everyone of age 15 to 64 and above except professional students.

Professional students are those who are enrolled full-time in school, college or university with the aim of acquiring academic qualification or skills.

A1.2 The Aspiration of Lifelong Learning in Malaysia

Promoting the development of knowledge and competencies of Malaysian citizens

to become knowledge-based, enlightened, developed and globally competitive society.

A2. Main International Policy Documents Related to LLL Referred and Supported by Malaysia

- 1 UN* Sustainable Development Goals 2030 Agenda (SDG2030)
- 2 UNESCO* Education for Sustainable Development 2030 (ESD2030)
- 3 UNESCO 2015 Recommendation on Adult Learning and Education
- 4 Asian-Europe Meeting (ASEM) Education Strategy 2030

*UN: United Nations
 *UNESCO: United Nations Educational, Scientific and Cultural Organisation

A3. Main National Policy Documents Related to LLL

- 1 Shared Prosperity Vision 2030 (WKB2030)
- 2 5-year Malaysia Plans: Twelfth Malaysia Plan (RMK12)
- 3 Malaysia Education Blueprint (Higher Education), 2015-2025
- 4 Blueprint on Enculturation of Lifelong Learning For Malaysia, 2011-2020



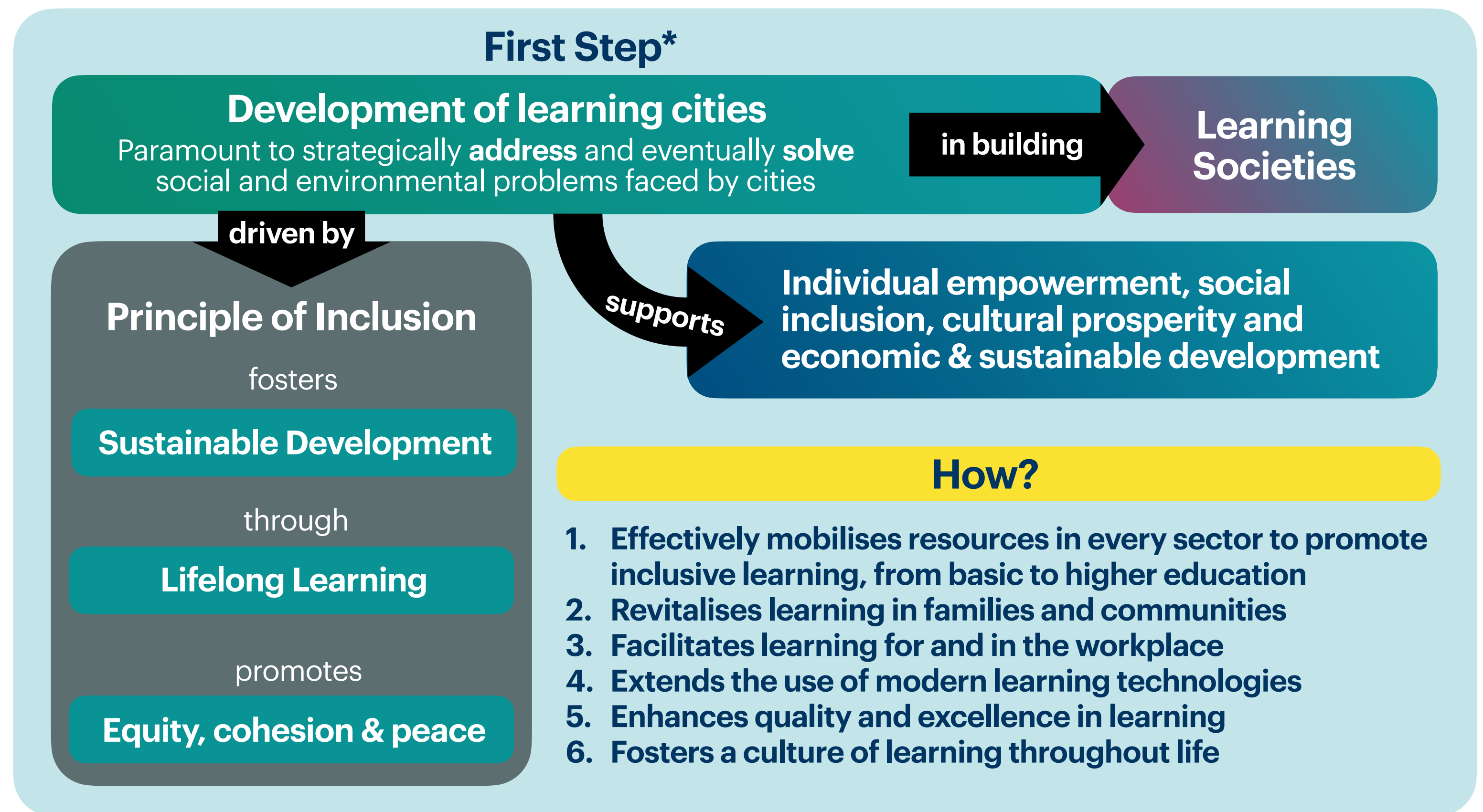
A Lifelong Learning Scenario in Malaysia (Continued)

A4. Governance of Lifelong Learning In Malaysia

- 1** **Lifelong Learning (LLL) National Committee**
Chaired by: Minister of Higher Education
Ministry of Higher Education (MOHE)
- 2** **LLL Technical Committee**
Chaired by: Secretary General, MOHE
- 3** **LLL National Secretariat**
Human Development Unit,
Policy and Research Division, MOHE
- 4** **79 memberships comprising Ministries, government agencies, private sectors and industry players**

A5. Building Learning Societies (BLS) and Learning Cities

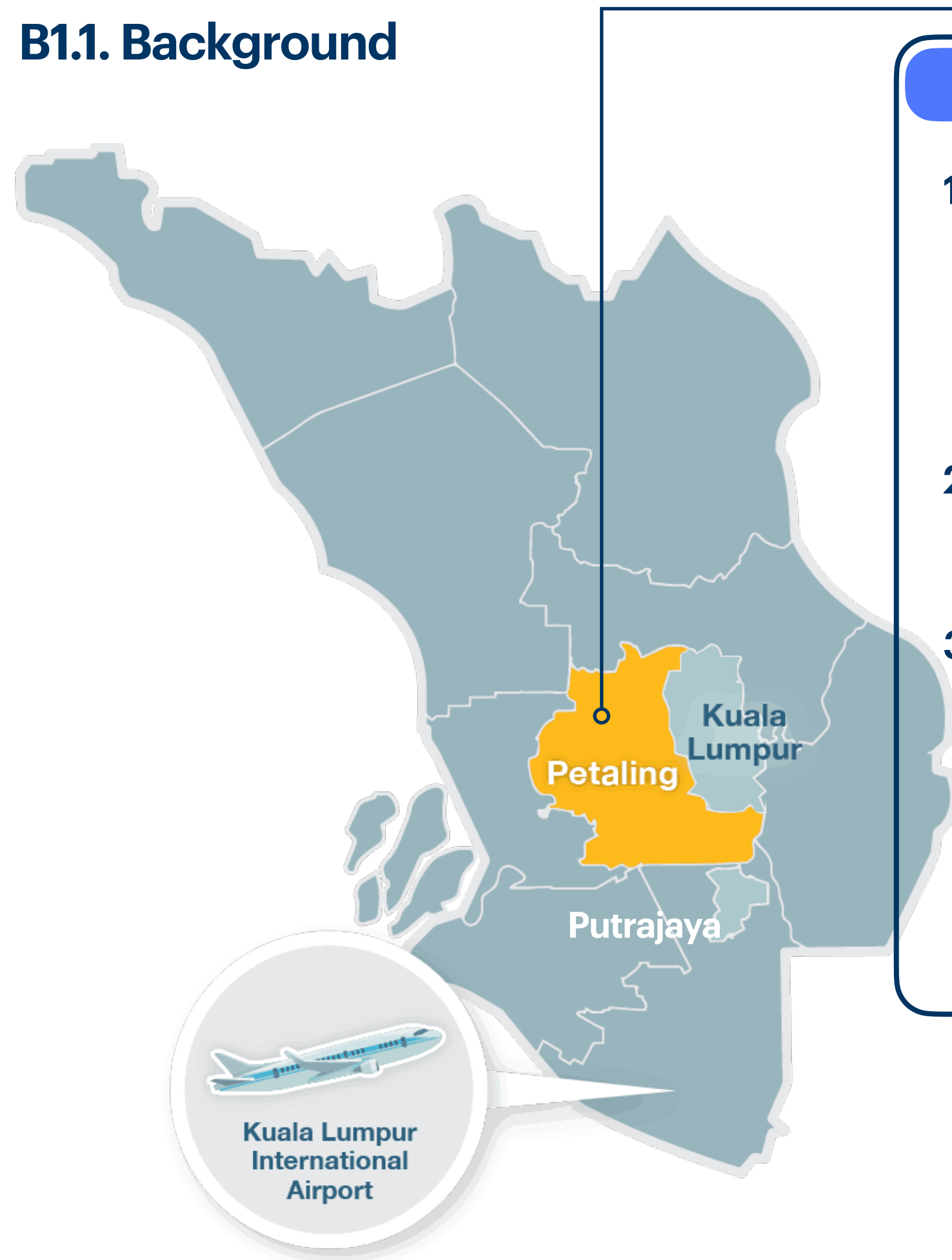
*Source: UNESCO





B Learning Cities in Malaysia ▶ 1. Petaling Jaya

B1.1. Background



Key Highlights

1. Petaling Jaya or commonly called "PJ" by the locals, is a city in Petaling District, in the state of Selangor, Malaysia.
2. PJ is a part of the Greater Kuala Lumpur area.
3. PJ had won a **UNESCO Learning City Award 2019** for its exemplary progress and commitment in promoting education and lifelong learning at the local level.

- *Seven impactful community events:
1. PJ Fair: Folklore Festival
 2. BookXcess Bookstore
 3. PJ international Youth Leadership Camp 2018
 4. "Jom Sihat" (Let's be Healthy) with the Elderly
 5. "Karung Kitar" (Recycled Sack Project) for "Urban Poor" City Residents
 6. Agrobox Urban Farming (organic food for business and personal consumption)
 7. "Us vs. Cyberbullying" with Digi Telco

B1.2. Award-Winning Initiatives

1 | Establishment of PJ Learning City Secretariat

2 | Free PJ City Bus and PJ School Bus Service

3 | Free Computer Literacy Programmes for Indigenous Community (the Temuan Tribe)

4 | Impactful Community Events*

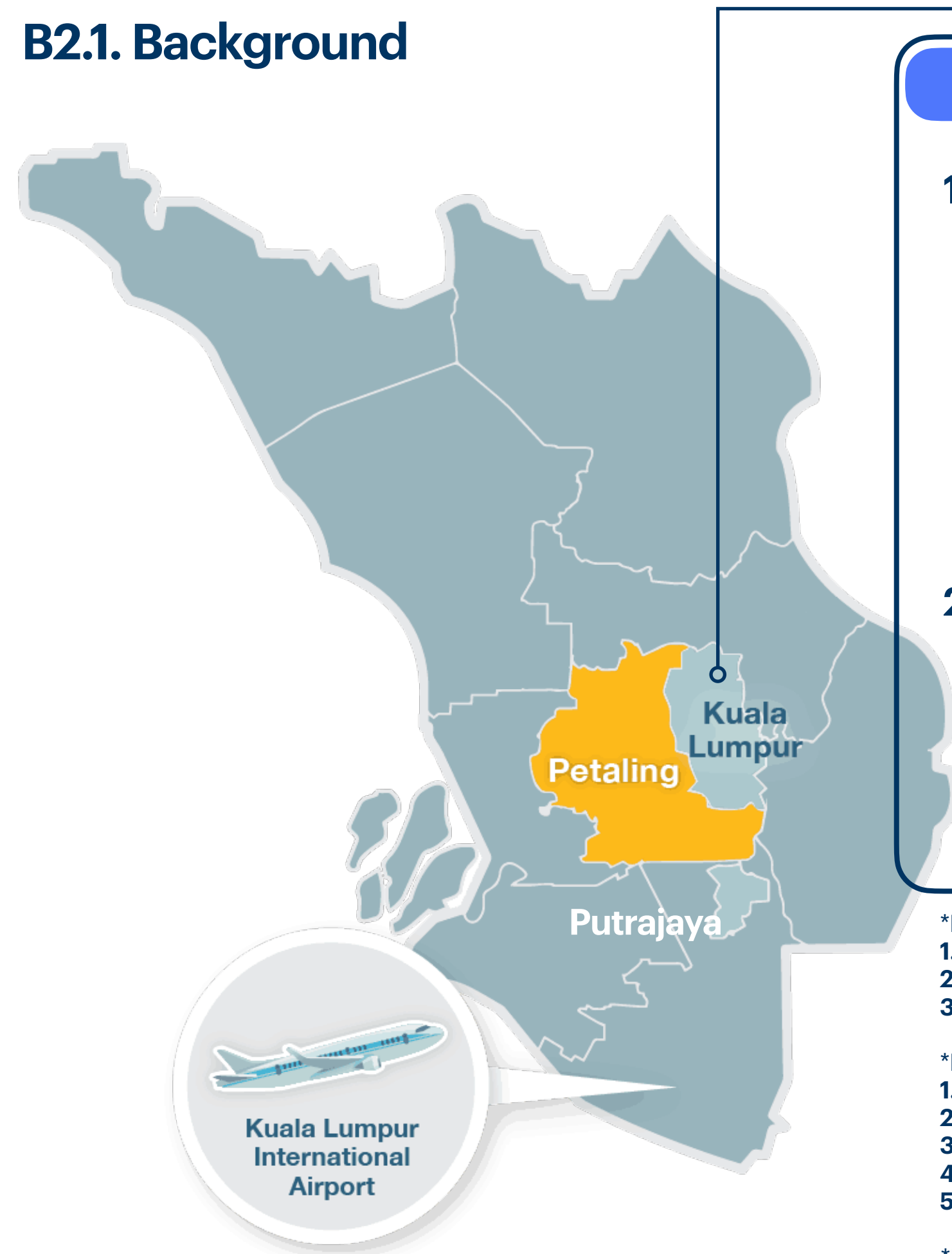
5 | Best Practices

1. Before food truck operators apply for an operating license, they must sit for a short course on how to be a responsible food truck operator.
2. Solid waste management contractors must go through a foundation course (ethics and professionalism) in providing their services.
3. Sellers at wet markets and hawker stalls are constantly educated to turn food waste into compost at the SMART PJ Waste Solution Lab to keep wet markets/stalls clean.
4. 100,000 homeowners are educated on how to make their homes more environmentally friendly in dealing with energy, water, waste management and transportation. Successful participants will be given a 100% rebate or RM500 (100 Euros), whichever is lower, on their property tax.



B Learning Cities in Malaysia ▶ 2. Federal Territory of Kuala Lumpur

B2.1. Background



Key Highlights

1. Federal Territory of Kuala Lumpur, colloquially referred to as “KL”, is one of the three federal territories of Malaysia (among Putrajaya and Labuan) and a capital city of Malaysia.
2. Greater Kuala Lumpur, also known as the Klang Valley, is among the fastest growing metropolitan regions in Southeast Asia.

*Projects executed for Space Activation include:

1. Backlane Cinema (educational screening)
2. Lorong Fest (Festival Alley)
3. Jalan-Jalan KL (Sightseeing KL)

*Projects executed for Beautification include:

1. Urban Playground (art and light installation)
2. Lorong Sisi Yap Ah Loy (restoration street art)
3. “Makan, Lepak@Lekiu” (mural art highlight)
4. Landscaping
5. Food Stalls Improvement

*Projects executed for Social Inclusion include:

1. Hawker Food Safety - Target group (TG): hawkers
2. SheFights (self-defence workshop) — TG: women
3. Health Programme - TG: vulnerable communities
4. Community Connect - TG: homeless individuals
5. Women’s Safety Focus Group - TG: women

B2.2. Popular Learning Clusters and Areas within the City

1 | KL Creative and Cultural District (KLCCD)*

1. Think City and City Foundation works together to **reinvigorate the dilapidated laneways in downtown KL area**, transforming the area to become a vibrant space and self sustaining creative & cultural hub.
2. The programme called “Laneway Improvement Programme 2019” used three approaches: **Space Activation; Beautification; and Social Inclusion.**

2 | KL City Centre (KLCC)

1. Local community and tourists get **shopping, dining and learning experience under one roof** and within the vicinity of KLCC.
2. The **educational attractions** within KLCC include Petrosains Discovery Centre; Kinokuniya Book Store; Aquaria KLCC; Petronas Twin Towers’ Skybridge; and KL Convention Centre.

3 | Dataran Merdeka KL QR Trail

1. KL QR Trail comprises of **15 checkpoints (historical landmarks)** with **information via QR codes** placed around Merdeka Square near each landmark.
2. Visitors and local people can **scan the QR code to get more information.**



B Learning Cities in Malaysia ▶ 3. Federal Territory of Putrajaya

B3.1. Background

Key Highlights

1. Federal Territory of Putrajaya or simply called “Putrajaya” by the locals, is a **planned capital city** that serves a function as the **administrative capital and the judicial capital of Malaysia.**
2. Envisioned by **Tun Dr. Mahathir Mohamad** (Malaysia’s 4th PM) in 1980s.
3. **Cyberjaya** is adjacent to and developed along with Putrajaya.

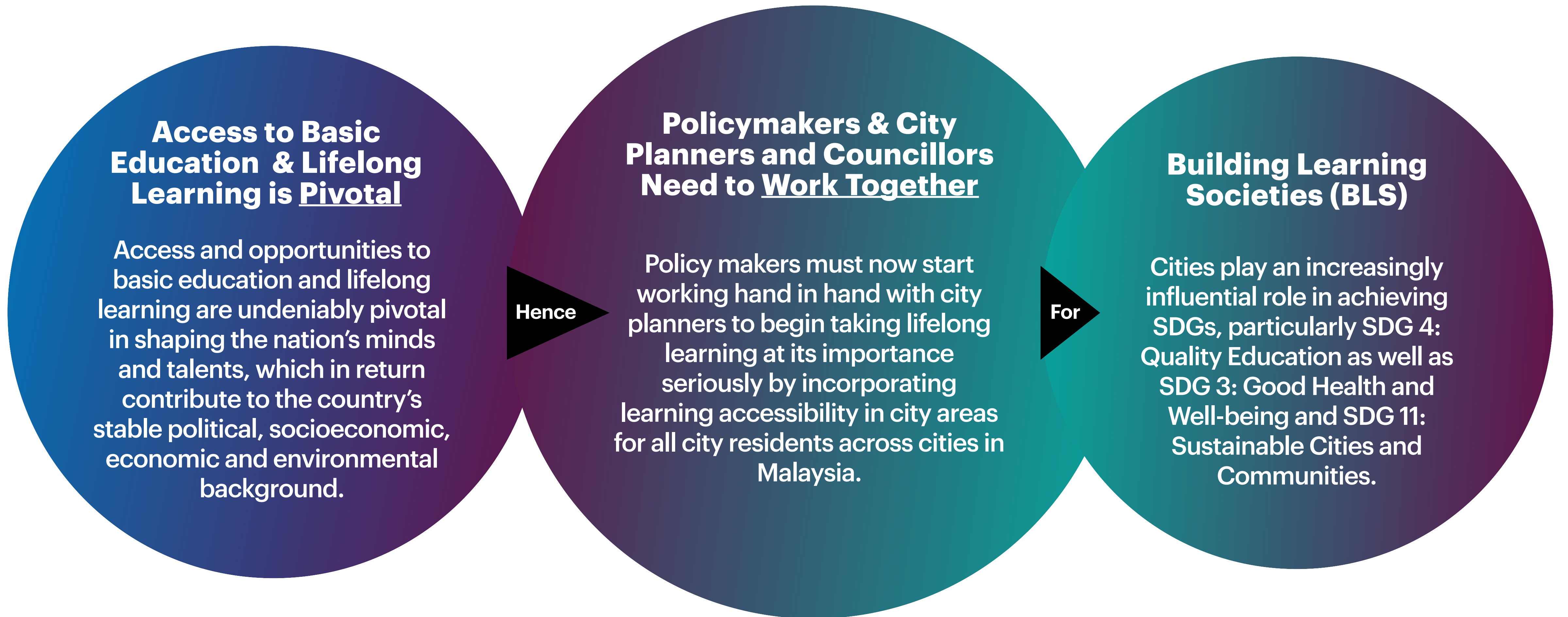
B3.2. Learning Accessibility within Putrajaya

- 1 | Numerous Neighbourhood Learning Centres
- 2 | Abundant Public Sports Facilities & Centres
- 3 | Surrounded by Greenery: Parks, Lakes and Wetlands (for recreation and education)
- 4 | Superb Architecture Mecca for Students
- 5 | Easy Access to International Schools & HLIs*
- 6 | Expansive Green Public Transportation Networks
- 7 | Prime Location for International Conventions

*HLIs: Higher Learning Institutions



C Conclusion





End of Presentation

Thank you

Prepared by:
**Lifelong Learning National Secretariat
Policy and Research Division
Ministry of Higher Education (MOHE)
Malaysia**

Prepared for:
**SEAMEO CELLL Regional Workshop on “Roles of Learning Societies in Lifelong
Learning Promotion and Progress of Development in Southeast Asia”
Ho Chi Minh City, Vietnam
28 June 2022**

